

LIFE Platform meeting Climate Strategic Integrated Projects

Working Group 1.1:

Multi-Level Governance & Mainstreaming Climate Policies

LIFE IP NASCCELERATE

Katja ten Hove

Ministry of Infrastructure and Water management





Goal of LIFE-IP NASCCELERATE

Acceleration of the implementation of the National Adaptation Strategy

By removing four barriers as identified by stakeholders:

- Availability and accessibility of knowledge and tools for local actors
- Great difference in awareness & sense of urgency between sectors, regions and government levels and public & private actors
- The governance of climate adaptation is highly sectoral at all levels
- Climate adaptation may involve high public and private investment costs and lacks financing models

Katja ten Hove





Knowledge and Tools	Business models and Finance	National Project
Governance and Integrated approach	Awareness and Sense of urgency	

KAKATOE – Future-proof ecology of large water bodies
Directorate-General for Public Works and Water Management (Rijkswaterstaat, RWS)

Health in climate adaptation policy
Public Health Services (GGD) Gelderland-Midden

Local climate information
Royal Netherlands Meteorological Institute (KNMI)

Agriculture and nature climate adaptation action programmes
Ministry of Agriculture, Fisheries, Food Security and Nature (LNV)

Amsterdam Weerproof
Waternet

Business models for peat soil
Peatland Innovation Center (VIC)

Gouda Solid City
Municipality of Gouda, National Soil Subsidence Knowledge Centre and Rijnland Regional Water Authority



Neighbourhood Climate Monitor
Municipality of Groningen

Climate-proof Súdwest-Fryslân
Municipality of Súdwest-Fryslân

Climate Campus: a climate-proof IJssel-Vecht Delta
Municipality of Zwolle

Apeldoorn City Park
Municipality of Apeldoorn

Climate-Proof Vallei-Veluwe Region
Water Authority Vallei en Veluwe

Towards a climate-adaptive City of Arnhem
Municipality of Arnhem

Heat Stress Strategy
Province of Utrecht

Increasing the sponge effect of the soil and water systems in the Utrecht-Southwest Region
Water Authority Hoogheemraadschap De Stichtse Rijnlanden

Climate-resilient brook landscapes
Province of Noord-Brabant and Water Authority Aa en Maas

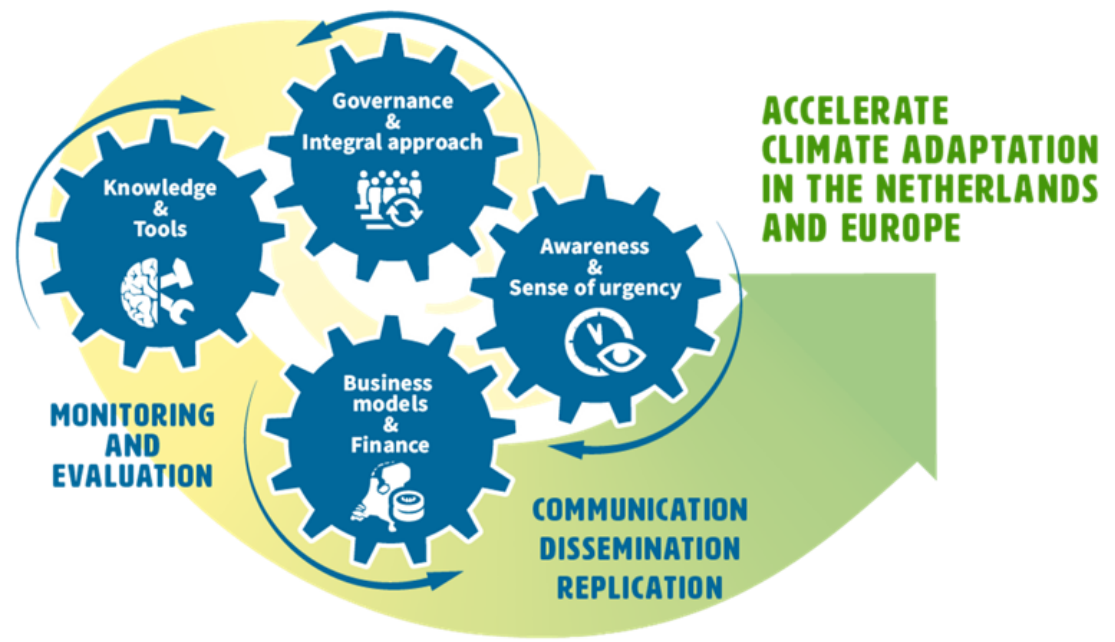
Local Heat Plan for the Municipality of Rotterdam
Municipality of Rotterdam / Public Health Services (GGD) Rotterdam-Rijnmond

Spuiboulevard Dordrecht
Municipality of Dordrecht

Katja ten Hove



Approach LIFE IP NASCCELERATE



Katja ten Hove



Within a context of cooperation:

- Deltaprogramme:
intergovernmental national programme
 - Flood risk management
 - Fresh water
 - Spatial adaptation (DPRA)
- Update National Adaptation Strategy
 - To be published end of 2026
 - Joint responsibility national ministries



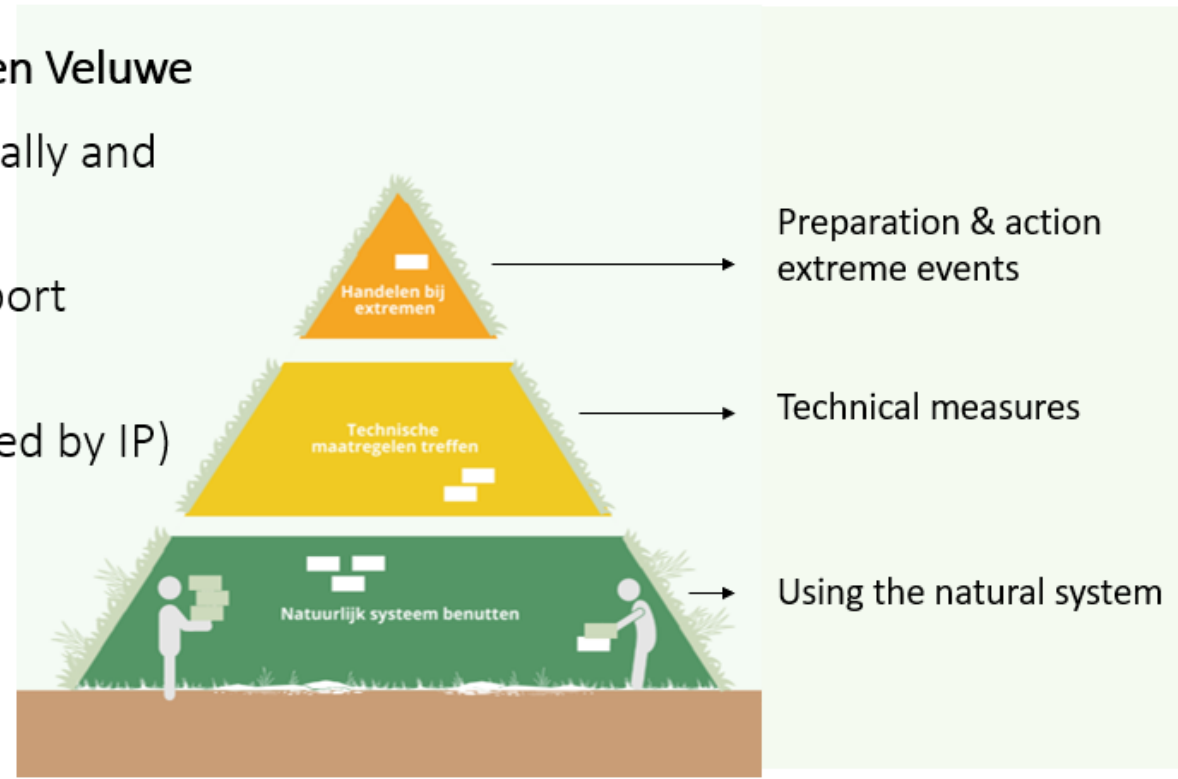
Katja ten Hove





Some examples: Adaptation Pyramid

- DPRA working region Vallei en Veluwe
- used for setting goals regionally and locally (in coherence)
- method finds uptake in support program DPRA
- + monitoring method (also fed by IP)



Katja ten Hove





Some examples: heat approach

- Community of practice: frontrunners, including IP partners
- Knowledge used to develop “Heat Menu”: measures towards heat resilience
- Three focus points: area, building and health
- Maintained by Netherlands Enterprise Agency (RVO)
- Used by many governments for heat approach
- Used by some provinces in Grant Schemes for Municipalities

- Embedding heat stress in policy: province of Utrecht has included agreements on climate adaptive construction and on heat in the draft Environment and Planning Strategy

Katja ten Hove

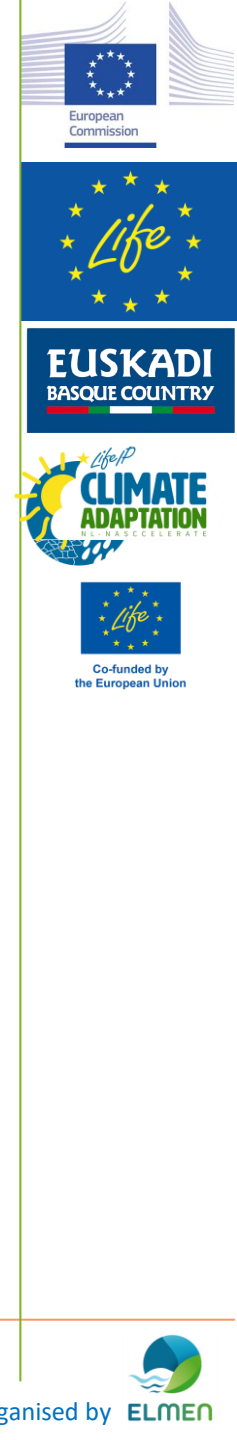




Some examples: network collaboration

- Climate Campus Zwolle: collaboration of municipality, entrepreneurs, inhabitants, research and education.
- Governance models tested: Climate Campus foundation (legal entity), municipality of Zwolle as “landlord” for Climate Campus team
- Main take aways:
 - An alliance starts with ownership, means and momentum with at least one of the partners
 - Starting point is defining the roles of the participants
 - Networking partners need to be able to connect to targeted impact → “Tomorrow’s Neighbourhood” works, “The Future Delta” does not
 - A live location / meeting place stimulates network collaboration
 - Making more impact together requires stretching each participant’s role.

Katja ten Hove





Challenges/barriers

- Key = cooperation on **all** government levels and with society: horizontal and vertical cooperation
- For the National Adaptation Strategy all relevant Ministries are engaged, but this still doesn't guarantee climate adaptation by design in all policy domains
- Engaging the social domain is a challenge, on all government levels. Deltaprogramme historically water related
- Local demand for national rules and regulations ↔ national political preference: deregulation



Katja ten Hove



Invitation to participate/contribute

Making Adaptation Work: The Power of Cooperation

International Event | 6-7 April 2027 | Apeldoorn (NL)

Day 1: Conference & Project Exchange | Day 2: Site Visits & Excursions



Katja ten Hove



LIFE Platform meeting on Climate Strategic Integrated Projects

21-23 April 2026, Bilbao